







# TECHSTONE

## LIQUID POLISH

**Liquid Polish Coating** is an innovative decorative material designed to create a refined and natural high-end finish that closely resembles fair-faced concrete. It offers a minimalist, artistic appeal that enhances the overall aesthetic of any space while providing practical benefits in construction. This advanced coating not only simplifies the application process but also improves efficiency, durability, and cost-effectiveness—making it an ideal solution for achieving a premium concrete look with modern performance advantages.

### Technical Specification

	Surface Dying Time -----	4 hours
	Spreading Rate -----	0.7kg/m <sup>2</sup>
	Thickness -----	1.mm/main coat
	Package Specification -----	5kg/ barrel

### Standard Application

- 01** Ensure that the wall is already skim coated, dry and even.
- 02** Apply the colored primer.
- 03** Apply the main coat to achieve desired pattern color preferably two coats with artistic skills using trowel to achieve desired finish.
- 04** For the final step, apply a water-repellent top coat for the protection and long-lasting durability of the product.

### Product Features

- ✓ Effectively prevents the deterioration and neutralization of cement walls caused by ultraviolet rays and rain.
- ✓ Highly flexible and permeable.
- ✓ Prevents rainwater stains & weathering of the building surface.
- ✓ Corrects color differences and defects in concrete while preserving its natural texture.
- ✓ Product life span average of 20 years. Top coat re-application recommended around 5-10 years.

 [www.portland-eco.com](http://www.portland-eco.com)  
 [info@portland-eco.com](mailto:info@portland-eco.com)  
 [www.facebook.com/portlandeco/](https://www.facebook.com/portlandeco/)



Scan the QR code to  
discover our complete  
catalog and color  
selections

 Ground Floor, PAFCIFIC Building,  
Bayani Road, Taguig City, Metro Manila  
 +632 8294 0478  
+63 917 700 0557



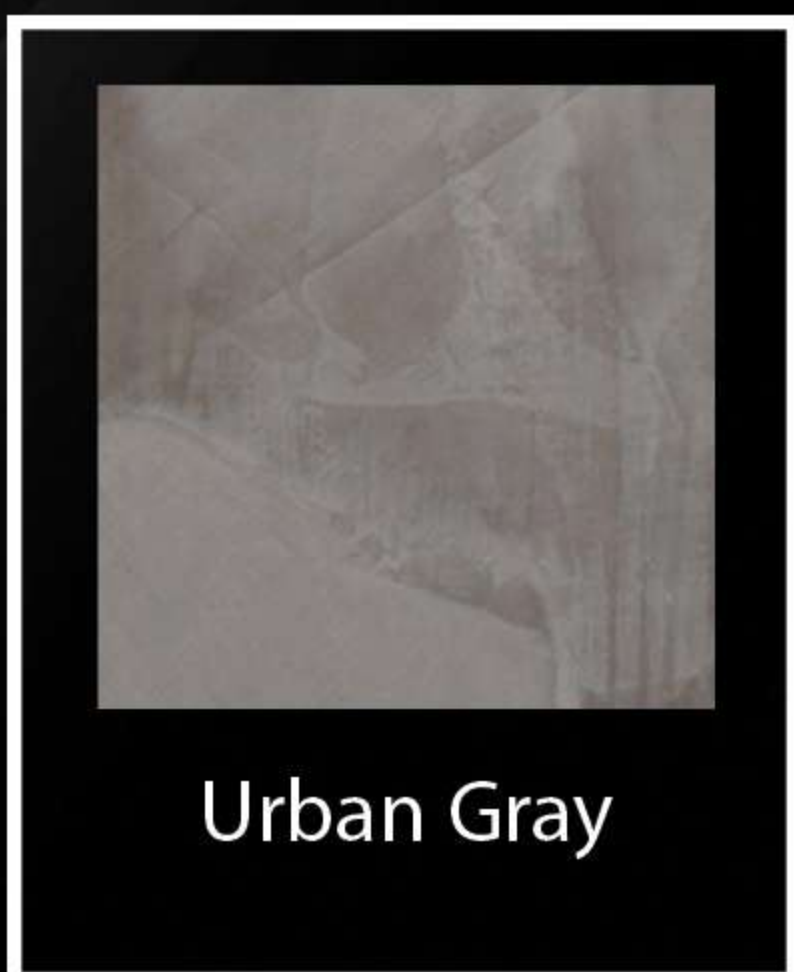


# TECHSTONE

## LIQUID POLISH



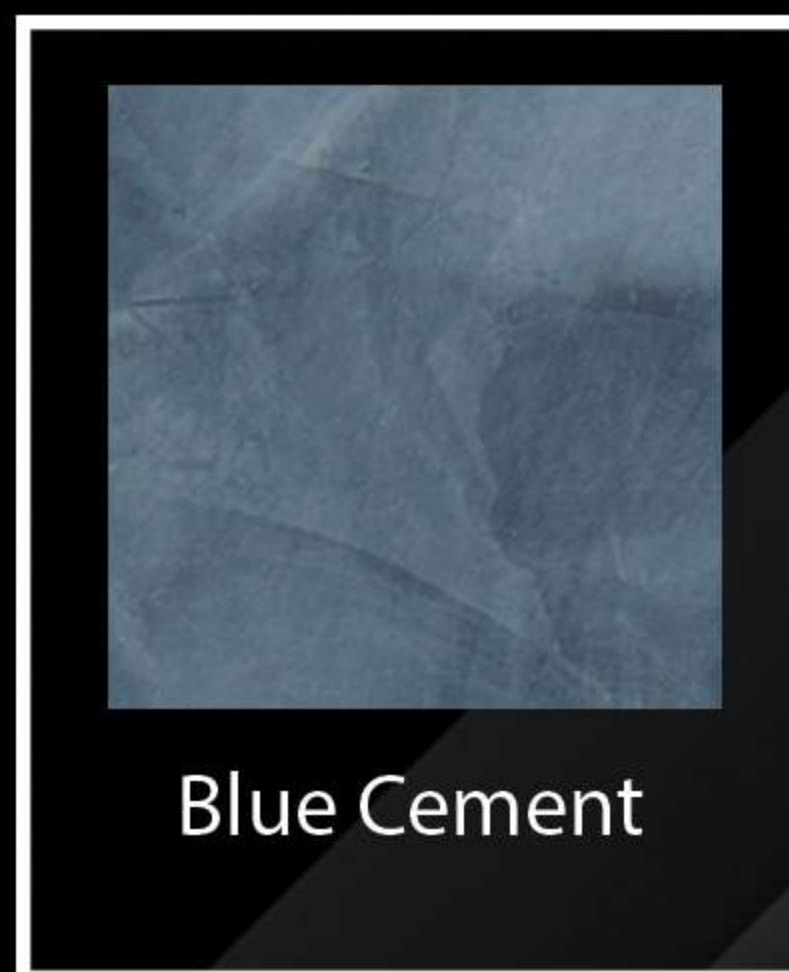
Roman Clay



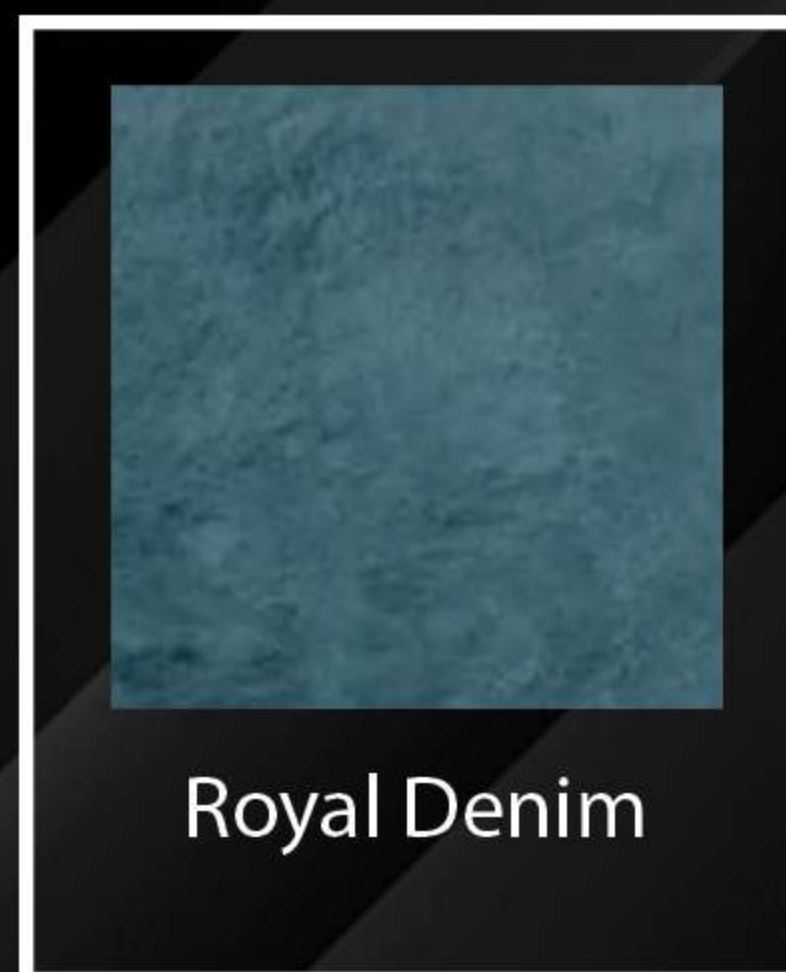
Urban Gray



Millenium Pink



Blue Cement



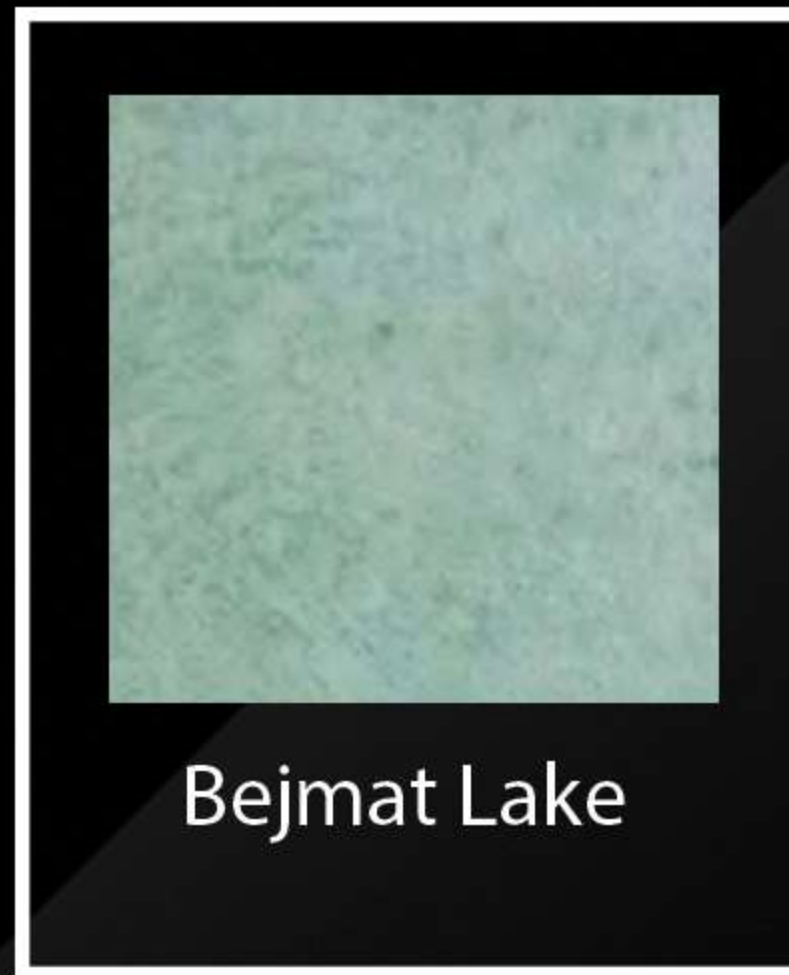
Royal Denim



Caesar Stone



Lime Mist



Bejmat Lake



Welsh Green



Chromework Green

 [www.portland-eco.com](http://www.portland-eco.com)

 [info@portland-eco.com](mailto:info@portland-eco.com)

 [www.facebook.com/portlandeco/](https://www.facebook.com/portlandeco/)



Scan the QR code to  
discover our complete  
catalog and color  
selections



Ground Floor, PAFCIFIC Building,  
Bayani Road, Taguig City, Metro Manila



+632 8294 0478  
+63 917 700 0557